

# TYCON PROJECT ENGINEERS

(CIVIL CONSTRUCTION AND CONTRACTING SERVICES)

## PROFILE



### CONTACT

**HYDERABAD**  
PLOT NO: M-29,  
TSIC COLONY  
JEEDIMETLA  
HYDERABAD-55

**VISAKHAPATNAM**  
Flat No:5A  
RK SHIVA RAMDAS APT  
CHINNA WALTAIR  
VISAKHAPATNAM-17

Email : [info@tyconindia.com](mailto:info@tyconindia.com) || [tycon@tyconindia.com](mailto:tycon@tyconindia.com)  
[www.tyconindia.com](http://www.tyconindia.com)



## COMMITMENT

We consistently seek new opportunities to deliver valuable Construction services to our clients. We approach our work passionately and enthusiastically. We continually improve our solutions, tools, methods and entire service delivery system for the benefit of clients. We conduct ourselves with uncompromising honesty and true commitment. We are driven to succeed. Your success is our success.

## AIM

At TYCON, Our aim is to provide high quality construction. Quality is an integral element of our operations. We work to ensure that all the services we render are conducted to the highest standards of excellence. It is this dedication to quality that has garnered for us the respect of our clients.

## OUR VISION

To be a significant contributor in the **CIVIL CONSTRUCTION** Projects.

## ABOUT OUR SERVICES

TYCON is a CIVIL CONSTRUCTION AND ENGINEERING Contract Firm with years of experience in the Construction of Various Projects. TYCON started by engineering professionals with practical experience in the field of civil construction, infrastructure development projects and related Engineering Fields.

Since, we have a Good Experience in the field of **Pharmaceutical facilities, Hospitals and Laboratories**, we provide the Design –Build services for the CIVIL & MEP works in the health care projects also.

We have built a reputation for delivering high-quality workmanship, timely completion and exceptional Client services. Our Team of skilled professionals are committed to provide Good Construction Practices all the time to meet the Project needs.

We follow **QUALITY** and **SAFETY** Guidelines for the services we take up in construction. We follow and assure our GOOD ENGINEERING PRACTICES all the time.

At TYCON, we undertake civil construction projects across various sectors. We provide the following Services.

- **CIVIL CONSTRUCTION WORKS ON CONTRACT BASIS.**
- **DESIGN-BUILD SERVICES FOR PHARMA FACILITIES, HOSPITALS & LABORATORIES.**
- **RENOVATIONS AND UPGRADATION SERVICES.**
- **PROJECT MANAGEMENT SERVICES.**



## OUR BUSSINESS SEGMENT

### 1. INDUSTRIAL PROJECTS CIVIL CONSTRUCTION.

TYCON has built many of the industrial plant establishments such as Multi-Level RCC Buildings, Pre engineering Buildings (PEB) & Conventional sheds Related Civil Works and steel Fabrication & Erection works.

We are providing our construction services for the following sectors.

- Manufacturing Facilities.
- Processing Plants and Related Ancillary Buildings
- PEB (Pre Engineering Buildings) & Sheds –Civil Construction Works. Convention Steel Structural Fabrication & Erection Works.
- Warehouses and Logistic Complex Projects.
- Food Processing Units and their Ancillary Buildings Construction.
- Captive Power Plants.
- Steel Plants Civil Works.
- Hatcheries, EC Sheds and Feed Mill Units.

#### **The Civil Works Such as**

Site Development Works || Civil Foundation Works || Back Filling & Compaction Works|| PCC Works and RCC Works || Brick and Plastering Works || Painting Works ||Flooring Works and VDF Flooring Works. Exterior & Interiors And Finish-Out Works ||Structural Steel Fabrication &Erection Works.

### 2. INFRASTRUCTURE DEVELOPMENTS

Tycon is Engaged in Civil Engineering infrastructure Construction projects which include Industrial infrastructures and Housing infrastructure development sector works.

#### **The Civil Works Such as**

CC Roads||BT Roads||Compound wall Constructions ||Drains and Culverts||Water supply Lines|| Elevated Over head Tanks & Under ground level RCC tanks ||ETP civil works and area development||Sub Stations civil works ||Storm water Drainage works|| Effluent treatment||Township Roads||Plumbing, Drainage and sewerage Lines Works||underground drainage systems||Water proofing works.



### **3. PHARMA FACILITIES, HOSPITALS & LABORATORIES (HEALTH CARE UNITS)**

At Tycon, we are committed to transforming your vision into reality with our comprehensive design and build services for green field to Existing pharmaceutical facilities up gradation.

**We provide a full Spectrum of Design-Build (CIVIL & MEP) Services for Pharmaceutical Facilities Like Intermediates || Bulk API || Formulation units of OSD's & Sterile facilities || R&D Labs || ANIMAL Houses. And also We provide Design –Build services For Hospitals And Diagnostic Laboratories.**

#### **Our works Includes**

Facility Design Consultancy || Facility Management and Construction Services || Civil Construction Works and its Allied Works || Modular Clean Rooms to meet cGMP || HVAC Works || Mechanical, Electrical and Plumbing works (MEP) || PHE Works and Fire Protection Works || Modular Operation Theaters and Hospital allied works || Diagnostic centers Civil, Interiors and MEP works

### **4. COMMERCIAL & RESIDENTIAL BUILDINGS CONSTRUCTIONS**

TYCON has built commercial and Residential RCC buildings with many years of excellent experience in buildings construction projects. We execute the projects on civil construction contractor basis. We have many years of experience with a wide variety of commercial buildings construction such as for:

#### **The Civil Construction Works for**

Data Centers || Office buildings || Retail stores || Warehouses (PEB'S & Conventional) || Parking Areas Developments || Residential || Interiors and finish-outs || Building renovations || Hotels || Resorts || Guest Houses || Educational Institute Buildings Construction.

### **5. INTERIOR AND EXTERIOR WORKS:**

TYCON has expertise in creating office spaces that fit for efficient working conditions.

Our Team Support the client in setting up the best Interior and Exterior works, whether it is Industrial offices, Corporate Interiors and Domestic centers.

We promise to deliver the best with the best techniques used by us. We offer our services at very reasonable prices.

#### **The Interior & Exterior Works for**

Interiors for Industrial Office spaces || cabins || Conference Halls || work stations || Interiors & Exteriors for Commercial office Spaces || Interiors & Exteriors for Pharma Facilities and Hospitals & Labs

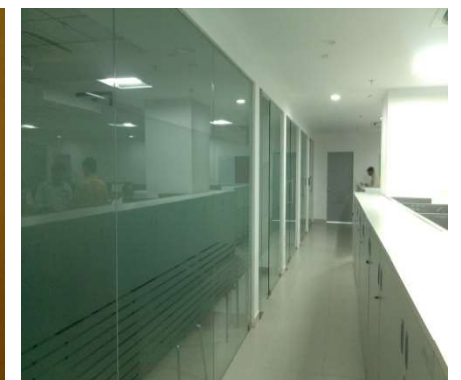
# TYCON



# TYCON



# TYCON





## TYCON CLIENT'S LIST

### **M/s. SILK ROAD SUGARS PVT LTD-(MURUGAPPA GROUP)-(10MW CAPTIVE POWER PLANT) -KAKINADA**

Construction of Coal Shed (100 m x 35m) with RCC Retaining Wall || Fly Ash Silo & Bed Ash Silo|| F.D&I.D Fan Foundation Work || Screen House with Transformer Tower Conveyor Foundations|| Roads and Drains || Construction of Crusher House

### **DR. REDDY'S LABS LTD - S E Z - VISAKHAPATNAM**

Site Gradation and Development works || All Round Compound Wall (15,000 R.M) Production Block and Clean Rooms || Engineering Block and Security office, Scrap Yard, Substation & Transformer Yard and Cooling Tower, ETP works || Roads, Kerbs other Misc Civil Works- Sub Contracting under taken.

### **M/s. TOSHIBA TRANSMISSION & DISTRIBUTION SYSTEMS INDIA PVT LTD - PATANCHERU MANDAL, MEDAK DISTRICT- HYDERABAD- UNIT -11A**

Site Grading and leveling works || Civil Foundations for PEB (250m x 65m) and other Civil Works || Compound Wall Construction || RCC Roads & Drain works || Water storage underground RCC sump etc., Clean room with Class One Lakh || PEB for Power Room || Complete electrical works with LED lighting || Fall Prevention fencing works and testing lab construction || Epoxy and ESD flooring at TCMS Area || Goods Lift foundations for 20 T Steel Mezzanine floor fabrication & erection || Class 100K –HVAC works || Complete Electrification Works || Anti static flooring works || Epoxy Flooring works || Modular Clean rooms constructions

### **M/s. S&P CAPITAL IQ -HYDERABAD.**

Renovation and up-gradation of Existing IT Company and Executed works for Civil, HVAC, Electrical and Fabrication works and Interior works

### **M/s. LAURUS LABS -HYDERABAD & VISAKHAPATNAM**

Civil Construction works for Production Block and Utility || Compound wall || Earth filling & Compaction work, Office Space interior works including Central Air conditioning.

### **M/s. HBL NIFE ENERGY POWER SYSTEMS-SEZ- VISAKHAPATNAM**

Construction of 200 m x 45 m PEB Shed with Meazine Floor || 160 m x45 m PEB Shed with Meazine Floor || Roads & Drains || Compound Wall for 15 Arcs || Workers Quarters || Construction of Executive Toilets & Non Executive Toilets || Construction of Utility and Canteen Building (Sanitary, water supply and Electrical) || Construction of Power House and Utility RCC Building 62 m x 30 m.

### **M/s. SILK ROAD SUGAR PVT LTD (MURUGAPPA GROUP) -KAKINADA**

Laying of RCC Roads (20,000 Sqm) || Raw Sugar Godown VDF Flooring Concrete (350m x 50 m) Construction of Storage Plant of 108 m x 36 m Including PEB Works.





### **M/s. RAIN CII CARBON LTD - VISAKHAPATNAM.**

Construction of Conveyor Belt Foundations, Pipe rack and Dump Hopper || RCC Roads & Drains with Culverts || Repairs & Rehabilitation of Silos || Construction of Machine Foundations, Generator Shed || RCC Flooring for Ware House Go down 150m x 30m

### **M/s. ABHIJEET FERRO ALLOYS - VISAKHAPATNAM**

Foundations works for Boiler F.D & I.D. Fans || Construction of Security Block, Time Office and Weigh Bridge || RCC Roads || B.T Roads || Construction of Ware House Go down & RCC Flooring || All Round Compound Wall 30 Arces.

### **M/s. CLEAN CITIES BIO DIESEL PVT LTD -SEZ -VISAKHAPATNAM**

Construction of 250 kl Water Sump || Workers Amenities || M/C Foundations

### **M/s. INTERNATIONAL PAPER (ANDHRA PAPER MILLS) -RAJAHMUNDRY**

Extension of Aeration Tanks || Pilling Works & PEB Shed Construction  
CC Road works || Compound wall with chain link fencing || Construction of raw material yard. Construction of Power room – Complete RCC building

### **M/s. ITC LIMITED -ANAPARTHY.**

Removing and Re- Fixing of Roof Sheeting's || Civil construction and Flooring Works

### **M/s. MECON - STEEL PLANT - VISAKHAPATNAM**

Renovation and Up gradation of Mecon Office at Steel Plant which includes Civil, Electrical, Inertial works.

### **M/s.SRI VANI CHE-LABS PVT LTD BULK API MANUFACTURING FACILITY - VISAKHAPATNAM**

Site Development works || Construction of Compound Wall || API & Pharma Production Blocks– RCC || Utility Block – RCC || Ware House –RCC || BT Roads.

### **M/s. SANIVERA INDUSTRIES LIMITED - VISAKHAPATNAM.**

Compound Wall Construction || Water Tank with Pump House (50 m x 25 m || Ware House Go down (100 m x 50m)  
Admin Building (G + 2 RCC Building) || Weigh Bridge (60 tones) & Batching Plant.

### **M/s. SARAD METALS & ALLOYS - VIZAYANAGARAM**

Lime Tank, Oil Tank || Crusher House || Screen House || R.R Drain wall 2500 R.M || Slag Compartment

### **M/s. GRANULES INDIA PVT LTD- HYDERABAD & VISAKHAPATNAM.**

Site Grading and leveling works || Utility Building construction || QC and QA Building Construction works || New Toilet Block works || Canteen and production block construction || Renovation and Up gradation of existing intermediates production Blocks.



**M/s. VISION PHARMA COAT PVT LTD- HYDERABAD.**

Renovation and up-gradation of existing Pharma facility to meet GMP norms and works executed for Civil, HVAC, Electrical and Fabrication works are involved (Design and Build).

**M/s. HBL POWER SYSTEMS PVT LTD.-SEZ, - VISAKHAPATNAM.**

Laying of WBM roads and RCC roads || Toilets Block Construction || Admin Block (G+2) Construction

**M/s. PENNAR INDUSTRIES LTD- PATANCHERU MANDAL, MEDAK DISTRICT-HYDERABAD**

Tanks farm area Foundation construction works || 5-Axis machine foundation 10 Mtr x 20 Mtr (-3mtrlvl)

**M/s. SUGUNA FOODS PVT LTD - TUPRAN-HYDERABAD**

Environment Control Block|| PEB shed || Anti Room || Manger Quarters || Staff Quarters || Labour Quarters || fencing || U.G. Sump || Roads || Egg Cool Room

**M/s. SUGUNA FOODS PVT LTD - VIJAYAWADA**

Feed Mill: RMIG || Mill Tower with Pilling || Boiler Shed || Oil Tanks || Admin Block || Labor Quarters || U.G. Sump || Roads || Fencing.

**M/s. SUGUNA FOODS PVT LTD -MAHABOOB NAGAR**

Construction of RMIG & Hatchery Buildings|| Mill Tower & Boiler Shed || Oil Tanks & Admin Block || Labor Quarters & U.G. Sumps || Roads-BT & Compound wall construction || Water proofing works || Weigh Bridge

**M/s. PARRY SUGERS (MURUGAPPA GROUP)-KAKINADA**

Construction of lime salt PEB structural Shed || RCC flooring at ETP || Fabrication shed at Chiller Area || M/c Foundation Works.

**M/s. V. DHANA REDDY & COMPANY SHIPPING SERVICES-VISAKHAPATNAM**

Construction of PEB shed || Admin block || UG Sump || CC Roads || Fencing works.|| Weigh Bridge

**ATHINA SUPER SPECIALITY HOSPITAL-GUNTUR**

Construction of 100 Beds Hospital - Works include Civil and MEP.

**INSIGHT DIAGNOSTIC CENTER - HYDERABD**

Construction of Doctors cabins and other MEP works.

**M/s. HILL STAY-RUSHIKONDA -VISAKHAPATNAM**

Construction of Civil Building (Stilt +G+4) and MEP works.

**M/s. E.I.D. PARRY (INDIA) LIMITED - VIZIANAGARAM**

Construction of Civil works.

**M/s. AMARA LIFE SCIENCES -VISAKHAPATNAM**

Construction of Civil Building and allied works .

**M/s. HBL Power Systems Limited.**

CC Roads and Civil works Construction.